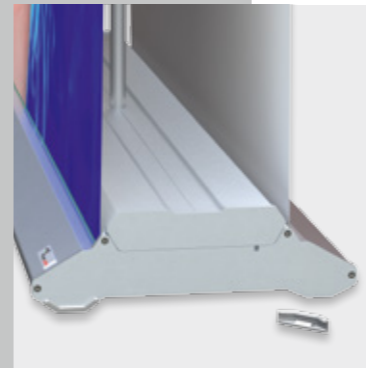
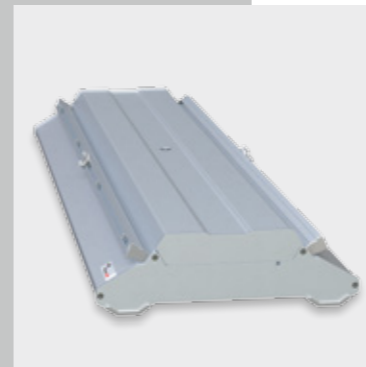
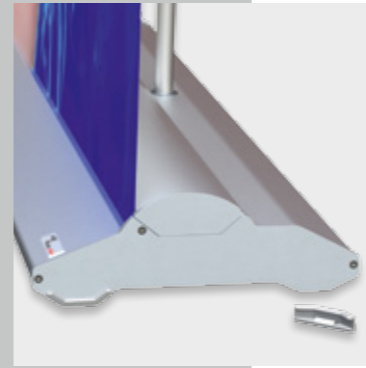
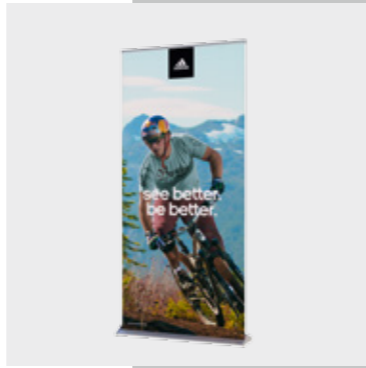
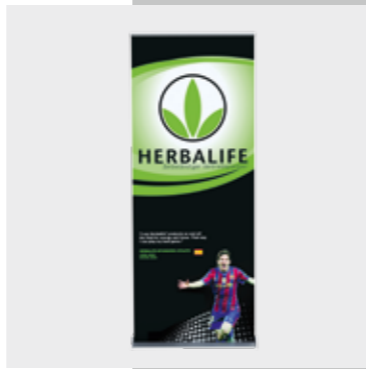


rollScreen_classic



www.best-systems.com
www.penguin.at
www.penguinjapan.com
www.penguinamerica.com

best systems gmbh
rudolf-waisenhorn-gasse 13
1230 wien / vienna - austria
tel: +43 1 8654082
fax: +43 1 8654082 20
office@best-systems.com
www.best-systems.com



rollScreen_classic

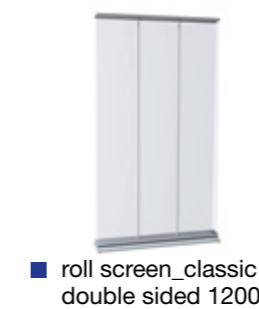
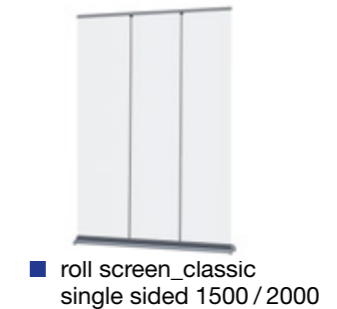
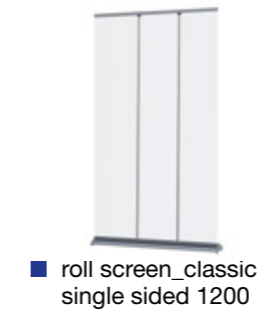
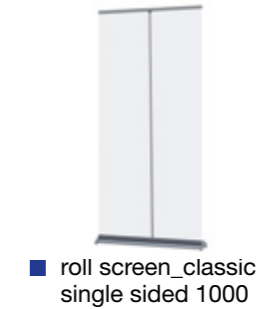
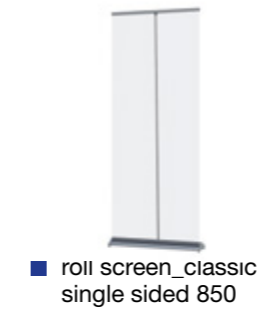
best
systems

roll up

rollScreen_classic



roll up
einfacher Paneeltausch möglich
– einseitige oder doppelseitige Modelle!



roll up
easy to change the panel
– single or double sided systems!

- Solid aluminium end caps
- Elegant wave design
- Durable case – easy handling (case opens along the full length)
- 3-part foldable or telescoping poles
- Clamp profile for panel fixing
- Simple to change the panels
- single sided systems available in 5 different widths up to 200 cm
- double sided systems available in 4 different widths up to 150 cm
- 2 additional bases i.e. draught attention: do not use additional weight
- Massive Seitenabdeckungen aus Aluminium
- Elegantes geschwungenes Design
- Aufklappbare, seitenwandverstärkte Transporttasche
- Wahlweise 3-teiliger Spannstab oder Teleskopstange
- Paneelaufhängung mittels Klemmschiene
- Einfacher Paneelwechsel möglich
- einseitige Modelle in 5 verschiedenen Breiten bis 200 cm erhältlich
- doppelseitige Modelle in 4 verschiedenen Breiten bis 150 cm erhältlich
- 2 zusätzliche Füße z.B. bei Zugluft Achtung: Einsatz nur ohne zusätzliche Beschwerung des Fußes

Accessories / Zubehör

Halogen spotlight / Halogenspot



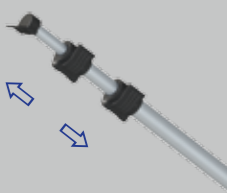
Spotlight bag / Lampentasche



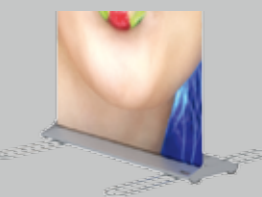
Transport bag / Transporttasche



Telescoping pole / Teleskopstange



additional bases / Zusatzfüße



System details / Systemdetails



Assembly / Aufbau

